

T90cn-0,4



Ratio
Rapporto / Verhältnis
1:1



RPM
Velocità / Drehzahl max.
10.000 min⁻¹



Max. axial load
Max. carico assiale / Max. Axialbelastung
60 N



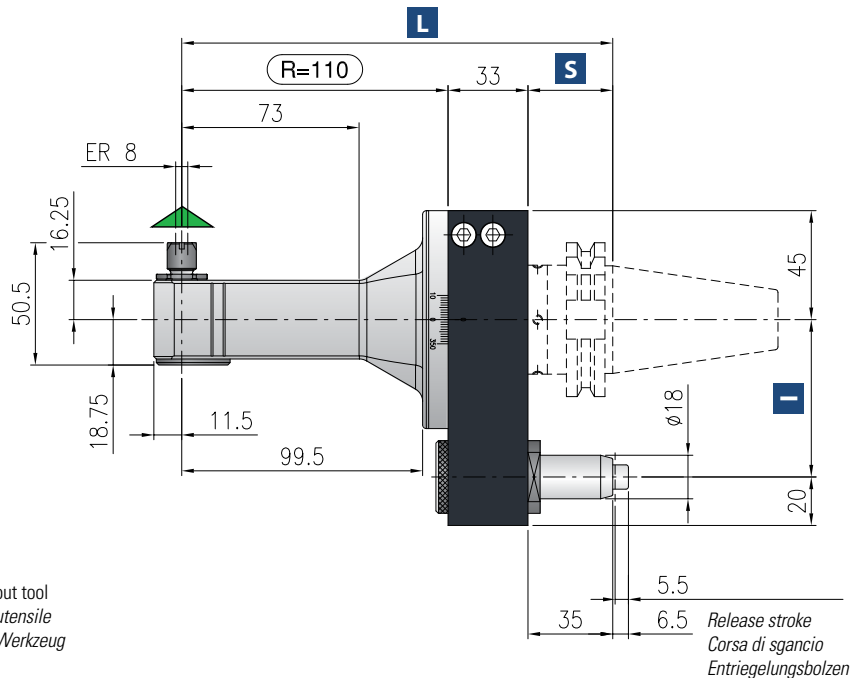
Torque
Momento torcente / Drehmoment
4 Nm



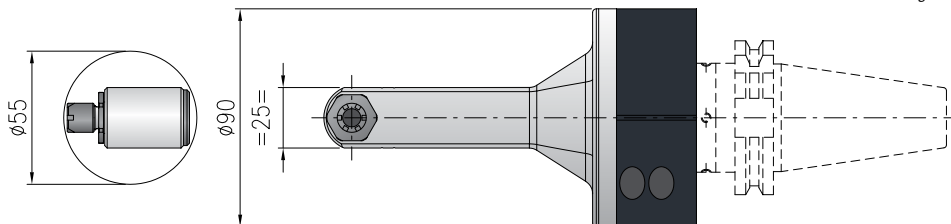
Weight
Peso / Gewicht
4 kg



Collet
Pinza / Spannzange
ER-8 Ø 0,5/5 mm



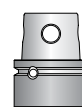
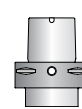
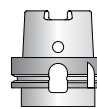
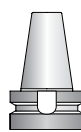
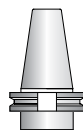
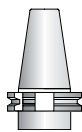
Minimum diameter without tool
Diametro minimo senza utensile
Durchmesser min. ohne Werkzeug



*** STANDARD EQUIPMENT INCLUDES:**

- Special bag - wrenches - Grease tube - Instruction book
- Bauletto - Ghiera ER chiavi di servizio - Tubetto di grasso - Libro istruzioni
- Spezialtasche - Schraubenschlüssel - Tube mit Fett - Bedienungsanleitung

Direction of rotation same as machine spindle / *sensò di rotazione uguale al mandrino / Drehrichtung gleich wie Antriebsspindel*



Shank/Cono/Aufnahme	DIN-69871		CAT		MAS-BT			HSK		CAPTO		KM
Size/Grandezza/Größe	30	40	50	30	40	50	63-80	100	C5-C6	C8	50-63	
I	65-80	65-80-(110*)	80-(110*)	65-80	65-80-(110*)	80-(110*)	65-80-(110*)	80-(110*)	65-80-(110*)	80-(110*)	65-80-(110*)	
S	35	35	35	30	35	41	42	45	38	40	40	
L	178	178	178	173	178	184	185	188	181	183	183	

*optional

Non interchangeable input drive shank/ Coni di attacco non intercambiabili/ Nicht wechselbare Aufnahme

Option / Opzione / Option



bar max
12

Coolant through pin
Adduzione refrigerante attraverso il perno
Kühlmittelzufuhr durch Bolzen



Ø mm max.
6

Weld on output
Weld on
Weld on-Aufnahme